



COALITION FOR
COMMUNITY
SOLAR
ACCESS

About Agrivoltaics

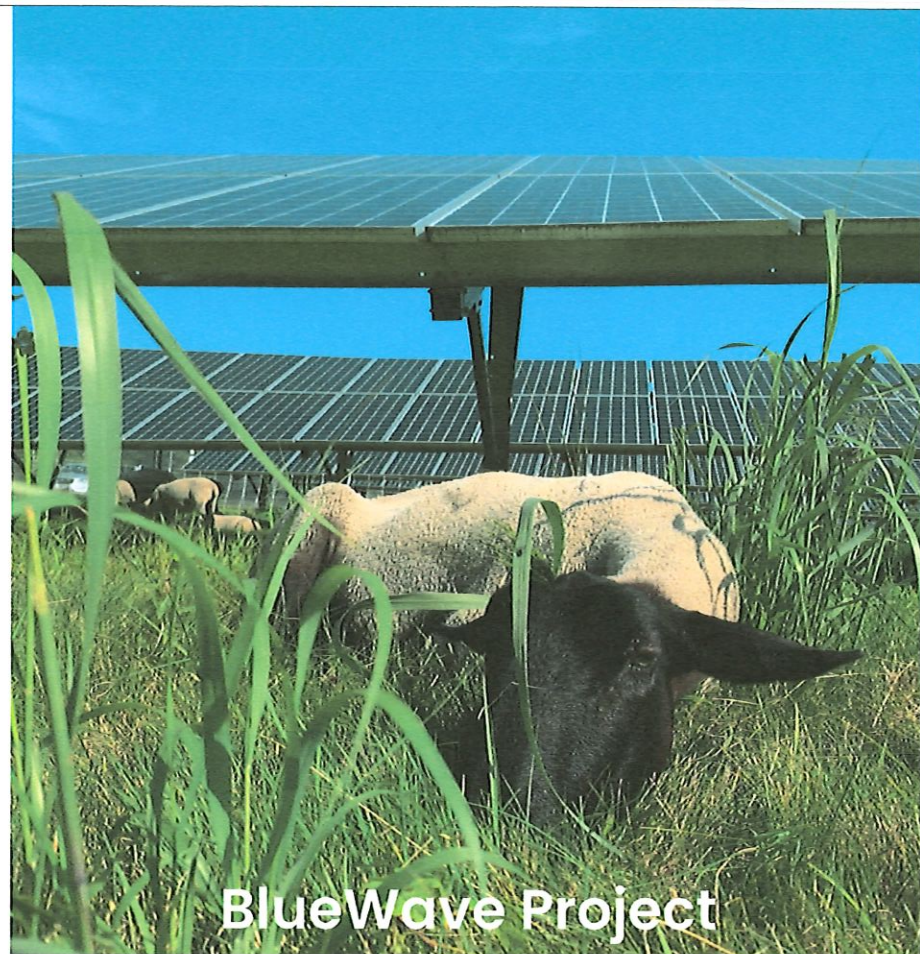
Dual-use solar projects are designed to provide appropriate spacing and height to allow for continued or renewed agricultural activity either around, between, or under the panels.

- The land is restricted to remain in agricultural production through the life of the project, often 20 years or more.
- Acceptable agricultural or horticultural activity is defined by existing statute or guidelines set by the local authority.
- Lease payments and a portion of any available incentives are paid to the farmer for the life of the project to ensure agricultural activity.
- Dual-use arrays can be individually designed to benefit a specific farm's needs around economic viability and crop diversity.

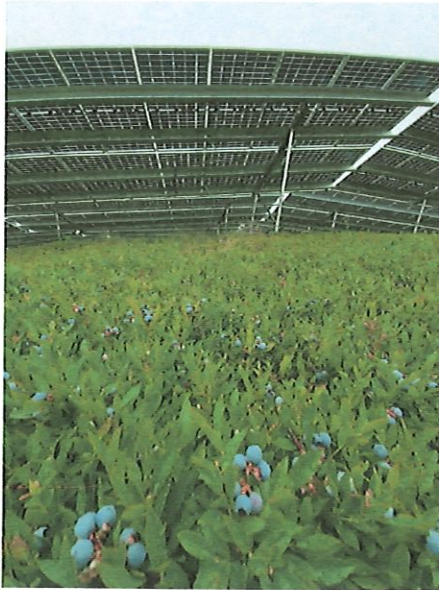


It's important to remember that dual-use is not a permanent form of development, unlike housing or industrial uses. In our experience, dual-use often provides the financial resources that farmers need to keep their farms viable in the face of development and other economic pressures.

The solar industry works with third-party farm managers to plan for regenerative practices, succession and new farmer training, and coordinating research on site.



Dual-Use Sustains Blueberry Farm Viability

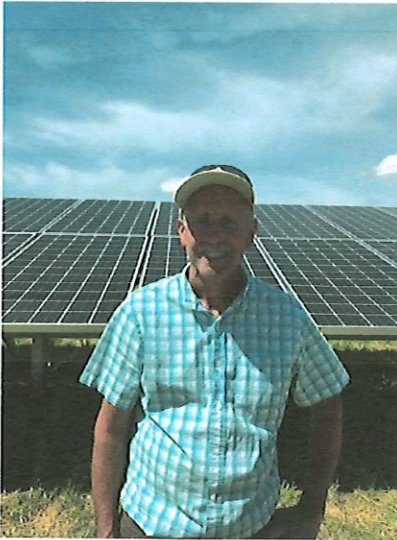


BLUEWAVE

Sweetland Blueberries - Rockport, ME

**Wild blueberries cultivated with custom equipment
Research partnership with UMaine**

Dual-Use Preserves and Expands Farm Operations for Future Generations



BLUEWAVE

Knowlton Family Farm - Grafton, MA

Returning to family-sustaining farming full-time

New strawberries, pumpkins, and rotational cattle grazing

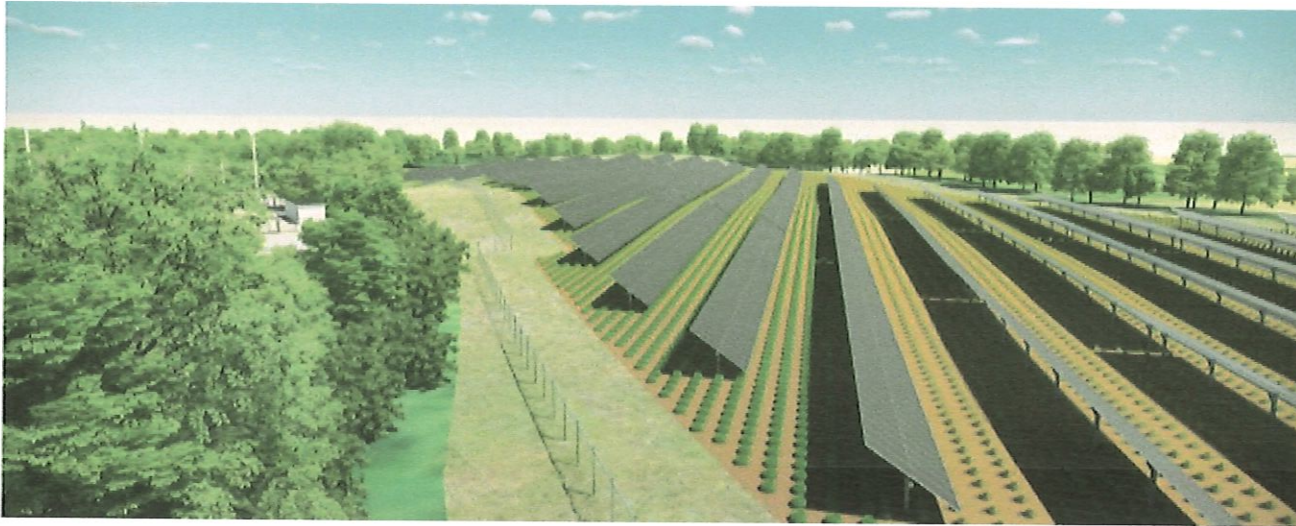
Soil research partnership with AFT, U.S. DOE



Lightstar Renewables AgPV 2022 – New York

LIGHTSTAR

DiMartino Family -
Historically a hay field
1 year of hay, transition to vegetables
Pumpkin production in between
Developed by Lightstar Renewables
Construction Spring 2023



Lightstar Renewables AgPV 2022 – New York

LIGHTSTAR

Thompson Family Farm –
Historically a hay field, family wants to
expand production
2 acres of Blueberries
2 acres of Strawberries
6 acres of Squash
Developed by Lightstar Renewables
Construction Spring 2023

Community Solar and Dual-Use

In order to deliver a diversity of projects within New Jersey's unique economic reality, we make the following recommendations:

- Set an Administratively Determined Incentive (ADI) for a **fixed dual-use adder**.
- Combined dual-use/Community Solar projects should only count towards the statutorily required 200MW dual-use program capacity, **in order to keep the two programs separate to start**.
- Classify dual-use as a **preferred site** under the Community Solar Permanent Program, to begin to fold in dual-use land use requirements.
- Implement a **working group**, with state participation, to produce effective and robust guidelines around construction, decommissioning, and reporting for dual-use projects.
- **NJ is primed to stand up a program** by Q4 2022- leveraging existing guidelines, best practices, and agricultural industry interest.

Next Steps

Other states are watching New Jersey to see what is possible. There is significant development pressure in New Jersey to reach the goals in our Energy Master Plan. If we don't act now, we will miss out on the many opportunities that dual-use can contribute to our clean energy future.

- 1) **Convene** Stakeholder Process, release straw.
- 2) Determine **guidelines** for dual-use projects, with spirit of innovation at the center.
- 3) Utilize **similar program entry** requirements from the CS program.



Northfield Agrisolar PV System:

- Oriented w/ single-axis trackers in north-south rows
- 7' wide panels on 23' centers
- 16' clear-height row spacing
- Clearance for most tractors & harvesters
- Example: 12' self-propelled mower-conditioner, to scale. Note cab clearance from panel rotation.

